

Have your say by participating in a survey as part of the 2010 National Pathology Workforce Study

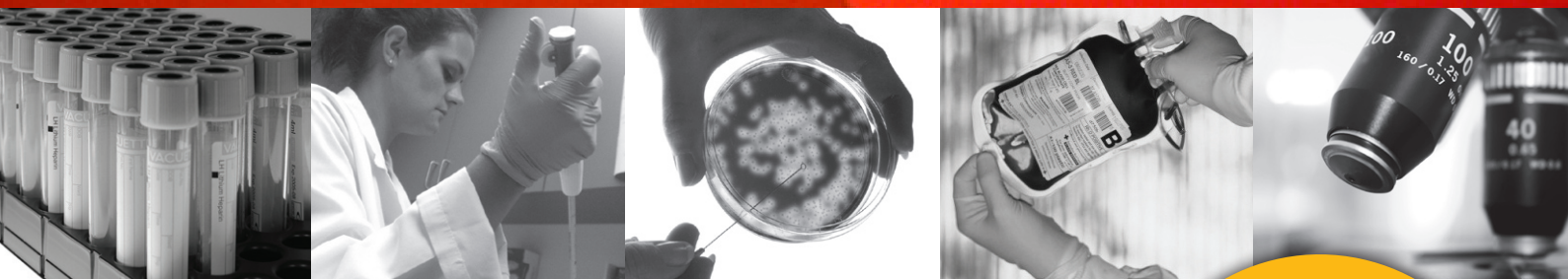
This is the first national pathology workforce survey of its type and will provide essential information about the pathology workforce and its sustainability.

By participating in this survey you will:

- Help determine the size and current state of the pathology workforce
- Help identify factors for promoting and inhibiting the future growth and development of the pathology workforce

We are aiming for a 100% response rate so your participation is vital. In addition, all participants can go into a prize draw to **WIN** one of **20 FOOD HAMPERS**.

The 2010 National Pathology Workforce Survey is being conducted by Urbis on behalf of the Australian Government Department of Health and Ageing under the Quality Use of Pathology Program



TURN OVER
FOR MORE
DETAILS

More about the survey:

- Participation is via a short online survey.
- You can complete this survey at work or at home – the choice is yours.
- The survey contains questions relating to your place of work and your job, as well as some details about you.
- The survey is being conducted by Urbis, an independent market and social research company appointed by the Commonwealth Department of Health and Ageing.
- All surveys are anonymous and the findings will be collated in a de-identified form. This online survey, once completed, will automatically be submitted directly to Urbis. At no time are completed surveys able to be linked back to you or your employer.
- For further information about the 2010 National Pathology Workforce Study click on www.health.gov.au/qupp

What do I have to do?

Please follow these simple steps:

- Click on the survey link below. This will take you directly to the online survey. If you don't have access to the internet, your employer can provide you with a hard copy of the survey for you to complete and mail to Urbis.
- Read the instruction page and commence the survey.
- Please only complete and submit one survey.
- If you have completed the survey online, please click the submit button. Please note that your survey will remain un-submitted until such time as you have clicked the submit button.
- The deadline for the completion and return of all surveys is **7 May 2010**.
- Should you have any difficulty with the survey please contact Lynda Jones on 02 8233 9945 or via email on ljones@urbis.com.au
- Now if you're ready to begin the survey, please click on the survey link <http://www.ys3.net.au/pathology.asp>.

**Many thanks again for your assistance
and good luck in the prize draw!**