



ST VINCENT'S  
HEALTH AUSTRALIA

# Haematology Trainees' Night 8th May 2018

## A/Professor Merrole Cole-Sinclair

Head, Laboratory Haematology

Haematology Department, St Vincent's Hospital

41 Victoria Parade, Fitzroy VIC 3065

Tel: 9231 3996 Fax: 9231 4214

[Merrole.COLE-SINCLAIR@svha.org.au](mailto:Merrole.COLE-SINCLAIR@svha.org.au)



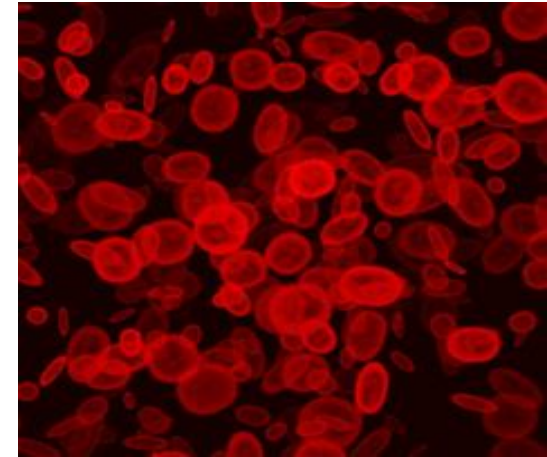
# Haematology Laboratory, STV

## The Haematology laboratory is part of STV Pathology providing diagnostic services to:

- St Vincent's Health Melbourne (St. Vincent's Fitzroy, St. George's, Caritas Christi etc., including ED, ICU, cardiac, orthopaedic and neurosurgery, haematology, oncology)
- St Vincent's Private Hospital (Fitzroy, East Melbourne & Kew including O & G, neonatal, clinical haematology)
- External specialists, GP practices

## General and special diagnostic haematology:

- 1400 FBEs/day
- 100 INRs/day
- 15-20 BMs/week
- Flow, Hb studies, transfusion lab, special coagulation, stem cell processing, limited molecular studies, VCCS on site
- 7 haematopathologists, variety of interests
- 1.5 Haematology lab registrars presently



# Haematology Laboratory, STV

## For Advanced Trainees in Haematology:

- excellent exposure to most aspects of general diagnostic haemato-pathology including tertiary hospital and community based work
- good support for teaching/training from experienced consultants and scientific laboratory staff
- remain involved with Clinical Haematology – weekly clinic, on call, MDMs, clinical and lab meetings, etc.
- support/encouragement to participate in projects etc.



# Haematology Laboratory, STV

Positions expected to be available in 2019:

## 1 Laboratory Haematology Registrar

- FT in laboratory with 1 OP clinic/week, laboratory and clinical on-call
- suitable especially for trainees sitting Part 1 RCPA Haematology exam

## 1 Laboratory/Clinical Haematology registrar [STP funded]

- 0.5 EFT clinical (at St Vincent's Private Hospital Fitzroy)
- 0.5 EFT laboratory (at St Vincent's Public Hospital Fitzroy)
- suitable especially for trainees in last year of training with interest in private sector clinical practice &/or ongoing laboratory haematology commitment

